



Meath Crescent, London, E2

BUTLER & STAG



**Guide Price - £475,000 to £500,000**  
**Discover the perfect blend of comfort and style in this spacious two-bedroom, two-bathroom apartment, situated on the cusp of Bethnal Green. This beautifully designed residence offers an abundance of living space and a large private balcony with stunning views of Meath Gardens.**



## Leasehold

- Two Double Bedrooms
- Two Bathrooms
- On-Site Concierge
- 6th Floor
- Spanning Over 850 Sq Ft.
- Stunning Views
- Large Private Balcony
- Lift Access

The apartment features a spacious open-plan living and dining area, perfect for both relaxing and entertaining. The contemporary kitchen is fully equipped with high-quality appliances and ample storage space, making it ideal for culinary enthusiasts.

Both bedrooms are well-sized and filled with natural light, offering a peaceful retreat from the hustle and bustle of the city, the master bedroom includes an en-suite bathroom for added privacy.

The apartment boasts two stylish bathrooms, complete with modern fixtures and fittings, ensuring a luxurious experience.

Step out onto your expansive private balcony and enjoy stunning, uninterrupted views of Meath Gardens. This outdoor space is perfect for al fresco dining, morning coffees, or simply unwinding while taking in the beautiful surroundings.

Located in vibrant Bethnal Green, this apartment provides easy access to local shops, cafes, and restaurants, as well as excellent transport links, ensuring you're always well-connected.

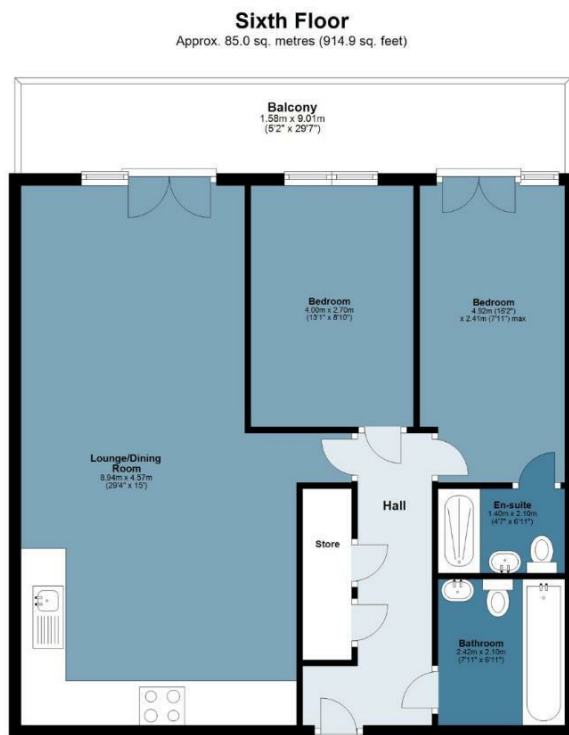




# Leamore Court



Approx. Gross Internal Area 79.1 sq. metres (851.42 sq. feet)



Measurements are approximate and for illustration purposes only. While we do not doubt the accuracy and completeness, we advise you conduct a careful independent assessment of the property to determine monetary value  
© @modephoto.uk www.modephoto.co.uk



☎ 020 8102 1236

🏠 508 Roman Road, Bow, London, E3 5LU

✉ bow@butlerandstag.com

[www.butlerandstag.uk](http://www.butlerandstag.uk)

IMPORTANT NOTICE - These particulars have been prepared in good faith and they are not intended to constitute part of an offer or contract. We have not performed a structural survey on this property and the services, appliances and specific fittings have not been tested. All photographs, measurements, floor plans and distances referred to are given as a guide and should not be relied upon.